

Kew



Price **Module 7**

Frontal: Solid In-frame design/Veneered/Marquetry centre panel. (Square-edged internal frame).

Standard Drawer: 500mm Silver powder coated drawer sides with full extension runners and Mfc base/back.

- Standard hinge system - Concealed clip hinges 100 deg. (fully cranked) 170 deg. hinge option (semi-cranked) with 9mm additional spacer plates.
- Optional hinge system (at extra charge) - Brass, Antique Pewter or chrome butt with ball catch.
- It is assumed that functional doors (operating in frame) require butt hinges only. However, if integral door and pull-out interior doors require false butt hinges fitted, please detail with preferred hand on kitchen elevation order.

Price	Door Colour/Ref	Carcase Options-Mfc	Suggested Plinth Style (Charged separately)	Handle Options	Handle Centre	Handle Alignment On Hinged Door	Jig Ref.
7	Maple/Maple Inlaid	Maple (35)	Maple Veneer (47)	210 Logo D	160	V	CJC
	Vertical Marquetry (502)			403 Arched D	128	V	CJC
				408 Engraved D	128	V	CJC
				434 Conical Steel Knob	-	-	CJC
				453 Wedged Arch D	128	V	CJC
				471 Allen Key D	128	V	CJC

Carcase Option

A. As solid/veneer will mellow with age, we recommend integral veneered end panels/plinths to ensure close colour co-ordination over long term. Extra charges apply. (Refer Section 7).



Maple In Frame 502



Glass Door.
Maple. Clear Glass.

Suggested Handle Choice



Logo D. 210



Arched D. 403



Engraved D. 408



Conical Steel Knob. 434



Wedged Arch D. 453



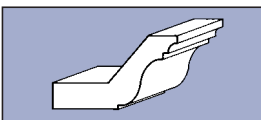
Allen Key D. 471

Premium Handles are available (see Section 0.42 and Section 8) and should be specified on order (extra charges apply per handle).

Alternative standard handles are available. Please refer to Range/Standard handle availability chart (see Section 0.43 and Section 8).

Cornice

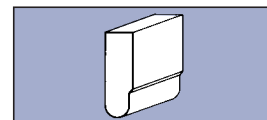
Model/Description	Colour (Ref.)
MLD011 Solid Cornice	Maple (47)
*Alternative styles available (refer Section 6)	



MLD 011

Pelmet Trim

Model/Description	Colour (Ref.)
MLD052 Veneer Pelmet Trim	Maple (47)
*Alternative styles available (refer Section 6)	



MLD 052