

Pulse

AVANT GARDE

Price **Module 2**

Frontal: Vinyl High Gloss

Standard Drawer: 500mm Silver powder coated drawer sides with full extension runners and Mfc base/back.

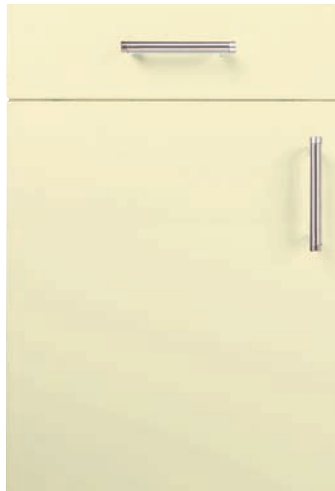
Price	Door Colour/Ref	Carcase Options-Mfc	Suggested Plinth Style (Charged separately)	Handle Options	Handle Centre	Handle Alignment On Hinged Door	Jig Ref.
2	Black HG (39)	Silver (10)	Black HG (39)	201 S/Steel Effect Knob	-	-	DGD
2	Ebony HG (40)	Silver (10)	Ebony HG (40)	208 Bi-metal D	160	V	DGD
2	White HG (42)	White (3)	White HG (42)	210 Logo D	160	V	DGD
2	Alabaster HG (41)	Alabaster (8)	Alabaster HG (41)	300 S/Steel Effect Bar	128	V	DGD
2	Latte HG (43)	White (3)	Latte HG (43)	453 Wedged Arch D	128	V	DGD
2	Havanna HG (44)	White (3)	Havanna HG (44)	471 Allen Key D	128	V	DGD

Carcase Option

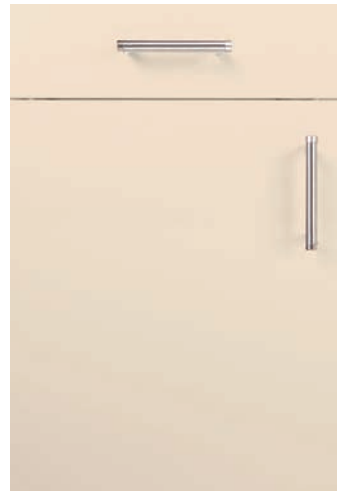
- A. If alternative carcass colour is required, this must be clearly stated on the order and apply to complete kitchens only. Options are - Alabaster, White, Light Oak, Maple, Milano Cherry Mfc..
- B. Integral laminate and veneered ends may be specified. These are double sided. Within certain carcass combinations they provide a contrasting internal colour where specified. (See Section 7).



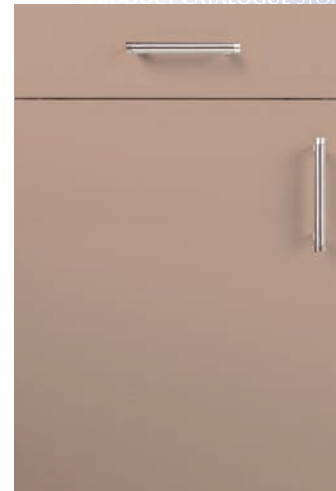
White HG 42



Alabaster HG 41



Latte HG 43



Havanna HG 44



Black HG 39



Ebony HG 40



1 Framed screen glazed



2 Letterbox vertical screen glazed



3 Aluminium Masterpoint
Aluminium frame. Masterpoint glass.
Standard handle fitted dependent on door†



4 Letterbox horizontal* screen glazed
*Limited size availability only.



5. Bowed front 720 x 1000 mm door available in Black HG (39) & Ebony HG (40) only.

Suggested Handle Choice



S/Steel Effect Knob. 201



Bi-metal D. 208



Logo D. 210



S/Steel Effect Bar. 300



Wedged Arch D. 453

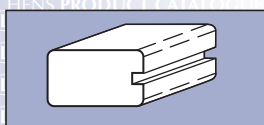


Allen Key D. 471

Premium Handles are available (see Section 0.42 and Section 8) and should be specified on order (extra charges apply per handle).
Alternative standard handles are available. Please refer to Range/Standard handle availability chart (see Section 0.43 and Section 8).

Cornice

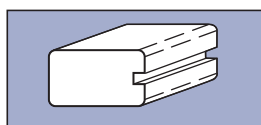
Model/Description	Colour (Ref.)
MLD 113 Foil wrapped cornice	Black HG (39)
MLD 113 Foil wrapped cornice	Ebony HG (40)
MLD 113 Foil wrapped cornice	Alabaster (41)
MLD 113 Foil wrapped cornice	White HG (42)
MLD 113 Foil wrapped cornice	Latte HG (43)
MLD 113 Foil wrapped cornice	Havanna HG (44)
*Alternative styles available (refer Section 6)	



MLD 113

Pelmet Trim

Model/Description	Colour (Ref.)
MLD 113 Foil wrapped pelmet	Black HG (39)
MLD 113 Foil wrapped pelmet	Ebony (40)
MLD 113 Foil wrapped pelmet	Alabaster (41)
MLD 113 Foil wrapped pelmet	White HG (42)
MLD 113 Foil wrapped pelmet	Latte HG (43)
MLD 113 Foil wrapped pelmet	Havanna HG (44)
*Alternative styles available (refer Section 6)	



MLD 113