

Scotney - Primed

Price **Module 6**

Frontal: Solid In-frame design/MDF raised and fielded centre panel. Slab style drawer front. Optional 5 piece drawer front style available (no extra charge). This requirement should be clearly stated on order. (**SCOT5D**). Handle choice should be considered carefully to suit this style.

Standard Drawer: 500mm Silver powder coated drawer sides with full extension runners and Mfc base/back.

- Standard hinge system - Concealed clip hinges 100 deg. (fully cranked) 170 deg. hinge option (semi-cranked) with 9mm additional spacer plates.
- Optional hinge system (at extra charge) - Brass, Antique Pewter or chrome butt with ball catch.
- It is assumed that functional doors (operating in frame) require butt hinges only. However, if integral door and pull-out interior doors require false butt hinges fitted, please detail with preferred hand on kitchen elevation order.

Price	Door Colour/Ref	Carcase Options-Mfc	Suggested Plinth Style (Charged separately)	Handle Options	Handle Centre	Handle Alignment On Hinged Door	Jig Ref.
6	Primed (184)	Maple (35)	Primed (84)	212 Walnut Knob	-	-	CKB
	(For Hand Painting)			408 Engraved D	128	V	CKB
				456 Cast Iron D	96	V	CKB
				457 Rose Bud Pull	-	-	CKB
				458 White Crackled Pewter	128	V	CKB
				464 Ant. Pewter Clasp	96	V	CKB

Carcase Option

- A.** If alternative carcass colour is required, this must be clearly stated on the order and apply to complete kitchens only. Options are - Alabaster, White, Light Oak, Maple, Silver, Milano Cherry, Planked Walnut Mfc.
- B.** When exposed T&G integral ends are required these should be specified as primed/solid colour T&G (Refer Section 7).



Primed Door 184



Optional raised and fielded drawer front (SCOT6D)



Glass Door. Primed. Clear Glass (with cross bar).

Suggested Handle Choice

Important – Due to restricted width of centre panel on drawer fronts SCOT5D (300mm width and below), it is recommended that a knob handle is used on this width or if a D handle style is required, this would need to be frame surface mounted. (internal available size = 75mm).



Walnut Knob. 212



Engraved D. 408



Cast Iron D. 456



Rose Bud Pull. 457



White Crackled Pewter. 458

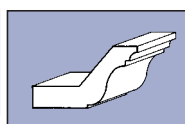


Ant. Pewter Clasp. 464

Premium Handles are available (see Section 0.42 and Section 8) and should be specified on order (extra charges apply per handle). Alternative standard handles are available. Please refer to Range/Standard handle availability chart (see Section 0.43 and Section 8).

Cornice

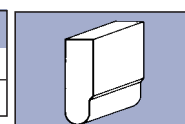
Model/Description	Colour (Ref.)
MLD011 Solid Cornice	Hand Painted (84)
*Alternative styles available (refer Section 6)	



MLD 011

Pelmet Trim

Model/Description	Colour (Ref.)
MLD042 Painted Pelmet Trim	Hand Painted (84)
*Alternative styles available (refer Section 6)	



MLD 042